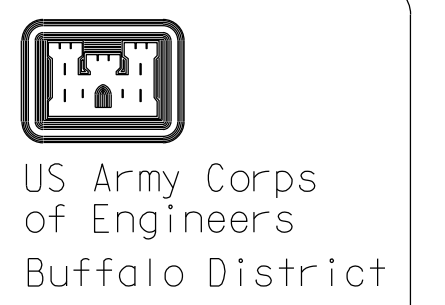


\*\*\* SAFETY PAYS \*\*\*



General Notes  
The information depicted on the map represents the results of surveys made on the date indicated and can only be considered as indicating the general condition of the river, unless otherwise noted on this map. All depths and soundings are in feet and referred to the International Great Lakes Datum 1985 (IGLD 1985) and all horizontal positions are referred to North American Datum 1983 (NAD83). See the Site Specific Notes for more information on this map. Point to map browser to <http://www.usace.army.mil/infocenter/cadsworld/>  
This drawing was prepared using a CAD system. Scoping may be distorted.

Drawn by: CAD  
Checked by:  
Reviewed by:  
On file: Survey Unit  
Approved:  
Dates:  
Office: NY/PA Navigation and Maintenance Section

U.S. ARMY ENGINEER DISTRICT  
CORPS OF ENGINEERS  
BUFFALO, NEW YORK 14207-3199

WILSON HARBOR, N.Y.  
PROJECT CONDITION SOUNDINGS 2010  
SCALE OF FEET  
25.0 50 100  
SCALE: 1" = 100'

Sheet reference number:  
VH - 101  
Sheet 1 of 1  
105-WIL-11

INSET 2: NOT TO SCALE

INSET 1: NOT TO SCALE

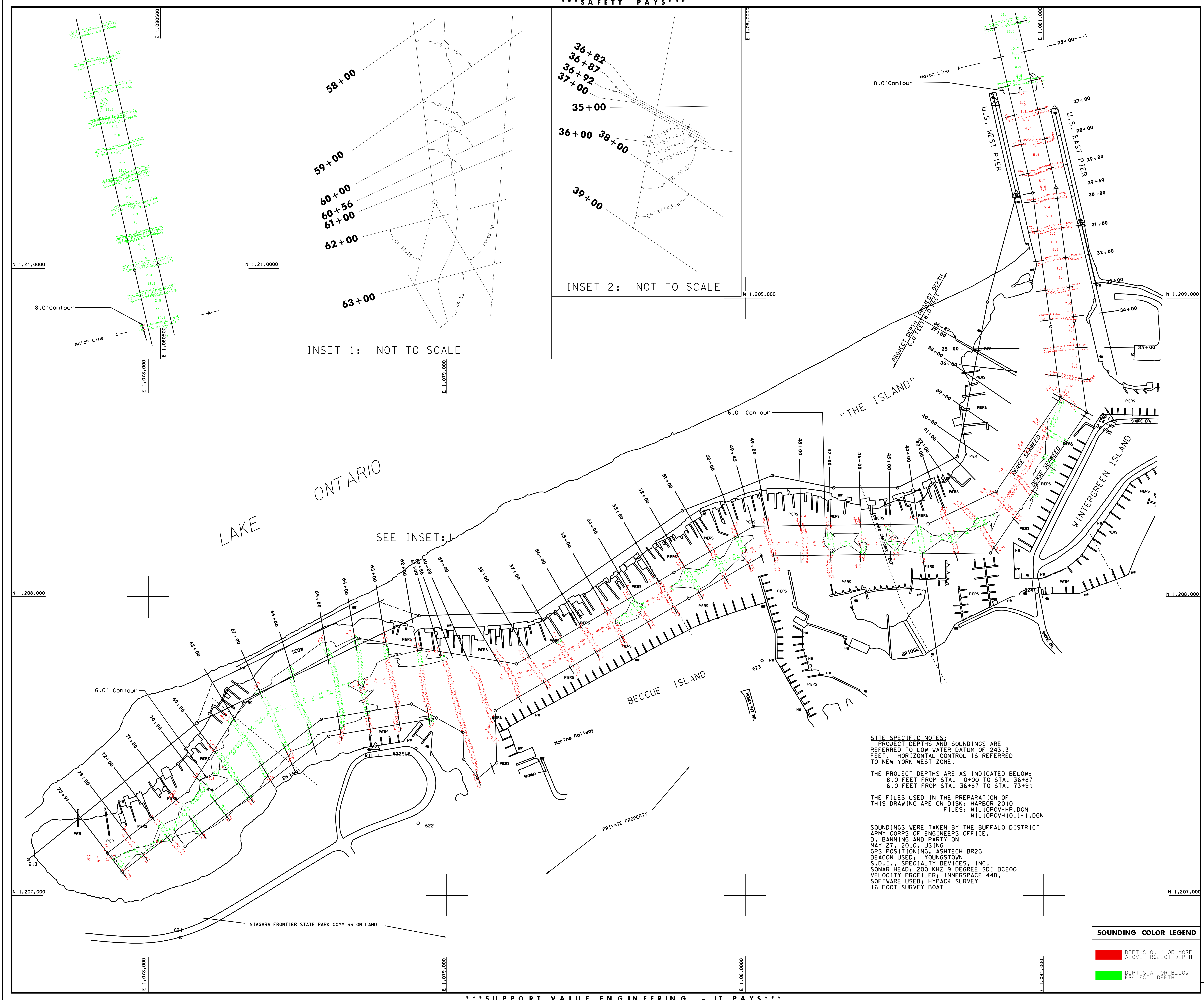
SITE SPECIFIC NOTES:  
PROJECT DEPTHS AND SOUNDINGS ARE REFERRED TO LOW WATER DATUM OF 243.3 FEET. HORIZONTAL CONTROL IS REFERRED TO NEW YORK WEST ZONE.

THE PROJECT DEPTHS ARE AS INDICATED BELOW:  
8.0 FEET FROM STA. 0+00 TO STA. 36+87  
6.0 FEET FROM STA. 36+87 TO STA. 73+91

THE FILES USED IN THE PREPARATION OF THIS DRAWING ARE ON DISK: HARBOR 2010  
FILES: WIL10PCV-HP.DGN  
WIL10PCVH1011-1.DGN  
SOUNDINGS WERE TAKEN BY THE BUFFALO DISTRICT ARMY CORPS OF ENGINEERS OFFICE, D. BANNING AND PARTY ON MAY 27, 2010. USING GPS POSITIONING, ASHTECH BR2G BEACON USED: YOUNGSTOWN S.D.I., SPECIALTY DEVICES, INC. SONAR HEAD: 200 KHZ 9 DEGREE SD1 BC200 VELOCITY PROFILER; INNERSPACE 448. SOFTWARE USED: HYPACK SURVEY 16 FOOT SURVEY BOAT

**SOUNDING COLOR LEGEND**

Red	DEPTHS 0.1' OR MORE ABOVE PROJECT DEPTH
Green	DEPTHS AT OR BELOW PROJECT DEPTH



\*\*\* SUPPORT VALUE ENGINEERING - IT PAYS \*\*\*